



Available Homes

PRINTED ON JUL 03, 2025

13045 Brookwood Bend Ln



\$393,972

1,847 sq ft | 3 beds
2 full baths | 1 half baths

Shea Homes

13093 Brookwood Bend Ln



\$395,527

1,847 sq ft | 3 beds
2 full baths | 1 half baths

Shea Homes

16522 Cub Creek Ct



\$380,520

2,630 sq ft | 4 beds
2 full baths | 1 half baths

Chesmar Homes

16438 Elk Meadow Dr



\$325,015

1,683 sq ft | 4 beds
2 full baths

Chesmar Homes

13015 Soaring Forest Dr



\$437,990

2,067 sq ft | 3 beds
2 full baths

Shea Homes

13039 Soaring Forest Dr



\$479,990

2,543 sq ft | 4 beds
3 full baths | 1 half baths

Shea Homes

13043 Soaring Forest Dr



\$449,990

2,234 sq ft | 4 beds
3 full baths

Shea Homes

13140 Soaring Forest Dr



\$449,990

2,467 sq ft | 5 beds
4 full baths | 1 half baths

Shea Homes

*Price for this home does not include closing costs and is subject to change. This is not an offer of real estate for sale, or a solicitation of an offer to buy, to residents of any state or province in which registration and other legal requirements have not been fulfilled. Pricing does not include options, elevation, or lot premiums, effective date of publication and subject to change without notice. All square footages and measurements are approximate and subject to change without notice. Trademarks are property of their respective owners. Equal Housing Opportunity. Features and plans subject to change without notice. Floor plans, maps and renderings are artist's conception based on preliminary information, not to scale and subject to change.



EVERGREEN-TEXAS.COM

13136 Soaring Forest Dr



\$499,990

2,593 sq ft | 4 beds

3 full baths

Shea Homes

16174 Rustling Woods Rd



\$610,981

3,636 sq ft | 5 beds

4 full baths

Chesmar Homes

16110 Rustling Woods Rd



\$539,990

2,814 sq ft | 4 beds

3 full baths | 1 half baths

Shea Homes

16119 Rustling Woods Rd



\$524,990

2,690 sq ft | 4 beds

3 full baths | 1 half baths

Shea Homes

12830 Forest Garden Ct



\$529,848

2,988 sq ft | 4 beds

3 full baths | 1 half baths

Chesmar Homes

12834 Forest Garden Ct



\$494,036

2,649 sq ft | 4 beds

3 full baths | 1 half baths

Chesmar Homes

16147 Rustling Woods Rd



\$659,990

2,438 sq ft | 5 beds

4 full baths | 1 half baths

Shea Homes

12965 Whitewater Way



\$772,990

3,709 sq ft | 4 beds

3 full baths | 2 half baths

Shea Homes

12914 Whitewater Way



\$734,990

4,105 sq ft | 4 beds

3 full baths | 1 half baths

Shea Homes

12926 Whitewater Way



\$754,575

4,142 sq ft | 4 beds

3 full baths | 2 half baths

Shea Homes

12944 Whitewater Way



\$774,900

3,391 sq ft | 4 beds
3 full baths | 1 half baths

Perry Homes

12727 Creekside Shadows Ln



\$729,930

4,615 sq ft | 5 beds
4 full baths | 1 half baths

Shea Homes

13027 Wandering Ridge Ln



\$474,990

2,703 sq ft | 4 beds
3 full baths

Highland Homes

13060 Wandering Ridge Ln



\$424,990

2,346 sq ft | 4 beds
3 full baths

Highland Homes

13032 Wandering Ridge Ln



\$414,990

1,985 sq ft | 4 beds
3 full baths

Highland Homes

16183 Sheridan River Trail



\$546,990

2,743 sq ft | 5 beds
3 full baths | 1 half baths

Shea Homes

16179 Sheridan River Trail



\$579,990

2,851 sq ft | 4 beds
3 full baths | 1 half baths

Shea Homes

16175 Sheridan River Trail



\$519,990

2,631 sq ft | 4 beds
3 full baths | 1 half baths

Shea Homes

16171 Sheridan River Trail

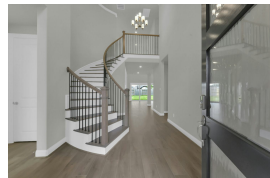


\$559,990

3,094 sq ft | 4 beds
3 full baths | 1 half baths

Shea Homes

16163 Sheridan River Trail



\$569,990

3,148 sq ft | 5 beds
5 full baths | 1 half baths

Shea Homes

16159 Sheridan River Trail



\$466,990

2,129 sq ft | 3 beds
2 full baths | 1 half baths

Shea Homes

13115 Brookwood Bend Lane



\$566,990

3,073 sq ft | 4 beds
3 full baths | 1 half baths

Shea Homes

13111 Brookwood Bend Lane



\$576,990

2,847 sq ft | 4 beds
3 full baths | 1 half baths

Shea Homes

15998 Mahogany Mist Dr



\$509,990

2,708 sq ft | 5 beds
4 full baths

Shea Homes

15982 Mahogany Mist Dr



\$578,900

2,973 sq ft | 5 beds
4 full baths | 1 half baths

Perry Homes

15930 Mahogany Mist Dr



\$499,900

2,504 sq ft | 4 beds
3 full baths

Perry Homes

15910 Mahogany Mist Dr



\$559,900

2,663 sq ft | 4 beds
3 full baths

Perry Homes

15943 Mahogany Mist Dr



\$499,900

2,589 sq ft | 4 beds
3 full baths

Perry Homes

15987 Mahogany Mist Dr



\$480,900

2,545 sq ft | 4 beds
3 full baths

Perry Homes

15995 Mahogany Mist Dr



\$604,900

3,048 sq ft | 5 beds
4 full baths | 1 half baths

Perry Homes

15818 Wild Rose Bend Dr



\$494,900

2,663 sq ft | 4 beds

3 full baths

Perry Homes

15814 Wild Rose Bend Dr



\$499,900

2,545 sq ft | 4 beds

3 full baths

Perry Homes

15831 Wild Rose Bend Dr



\$549,900

2,796 sq ft | 4 beds

3 full baths | 1 half baths

Perry Homes

15841 Wild Rose Bend Dr



\$549,900

2,797 sq ft | 4 beds

3 full baths

Perry Homes

16007 Mahogany Mist Dr



\$574,990

3,092 sq ft | 4 beds

3 full baths | 1 half baths

Shea Homes

12592 Rosy Paintbrush Drive



\$724,900

3,714 sq ft | 4 beds

3 full baths | 1 half baths

Perry Homes

12588 Rosy Paintbrush Drive



\$774,900

3,295 sq ft | 4 beds

3 full baths | 1 half baths

Perry Homes

12584 Rosy Paintbrush Drive



\$676,900

3,092 sq ft | 4 beds

3 full baths | 1 half baths

Perry Homes

12602 Ivory Yarrow Court



\$934,900

4,891 sq ft | 5 beds

4 full baths | 1 half baths

Perry Homes

15810 Mossy Juniper Lane



\$799,900

3,964 sq ft | 5 beds

4 full baths | 1 half baths

Perry Homes